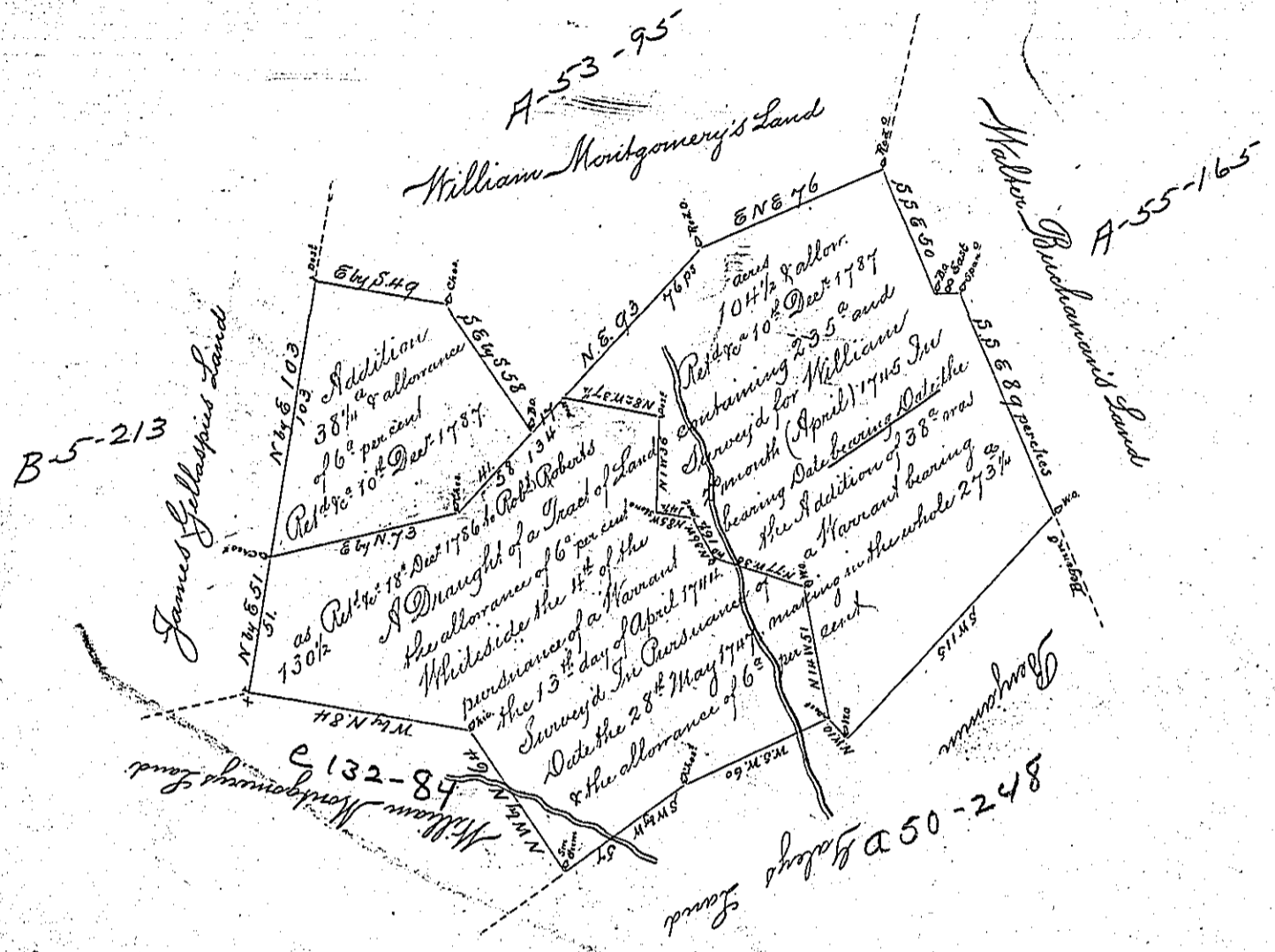


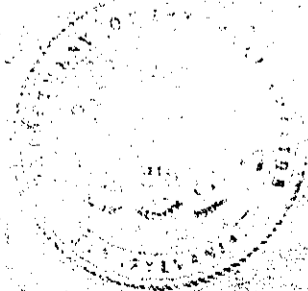
see E 131



The Tract of Land above described lies on the Branches of Cananawago Creek in Little Britain Township Lancaster County. The first Tract was surveyed by my Father, & the latter by  
 Geo. Churchman D. S.

IN TESTIMONY that the above is a copy of the original remaining on file in the Department of Internal Affairs of Pennsylvania, made conformably to an Act of Assembly approved the 16th day of February, 1833, I have hereunto set my Hand and caused the Seal of said Department to be affixed at Harrisburg, this

fourth day of September 1890



*James W. Latta*  
 Secretary of Internal Affairs.